

# TIMBAPLAY SWING - 3 BAY - 2VR - TWC

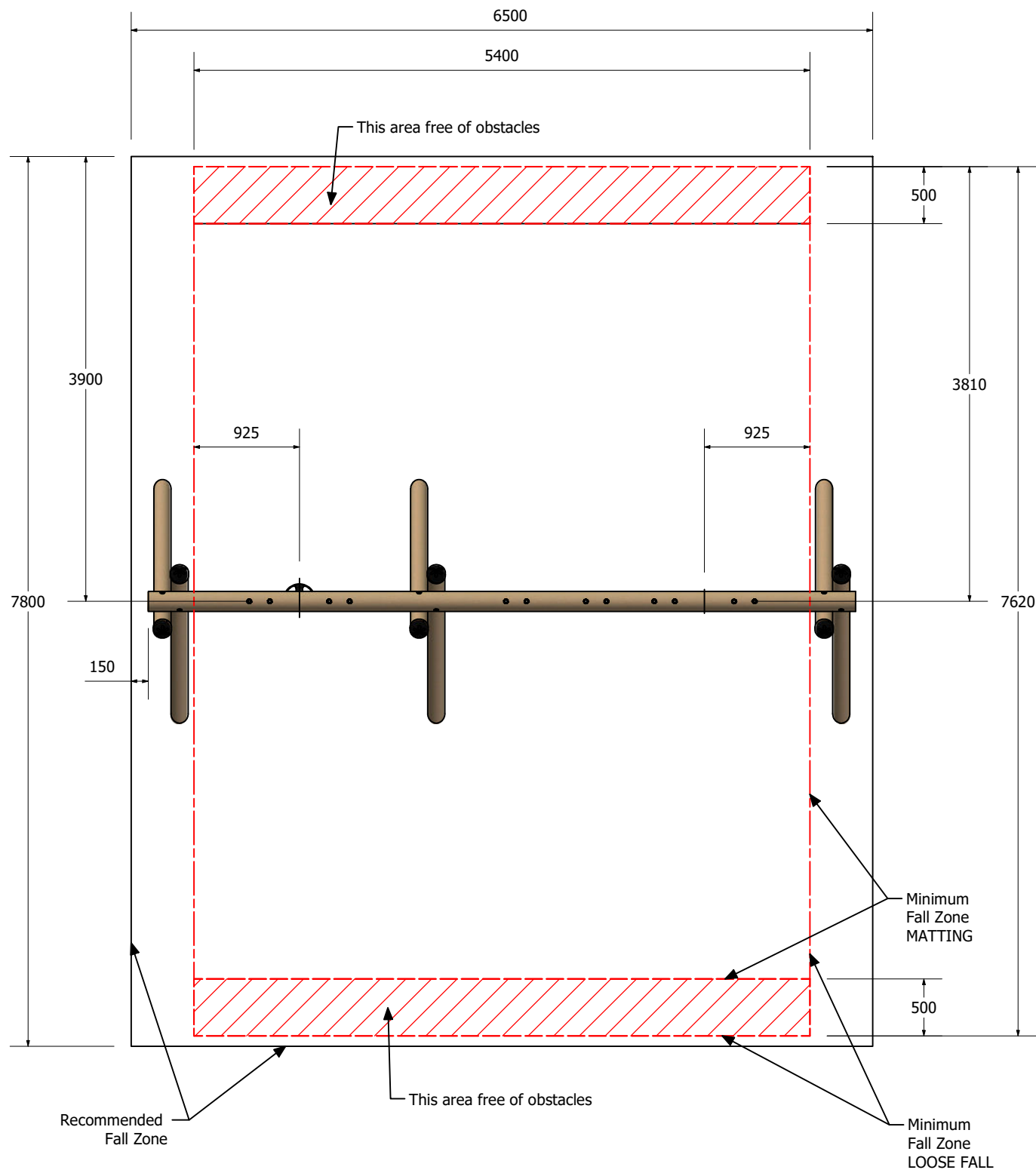
SWTP3S02



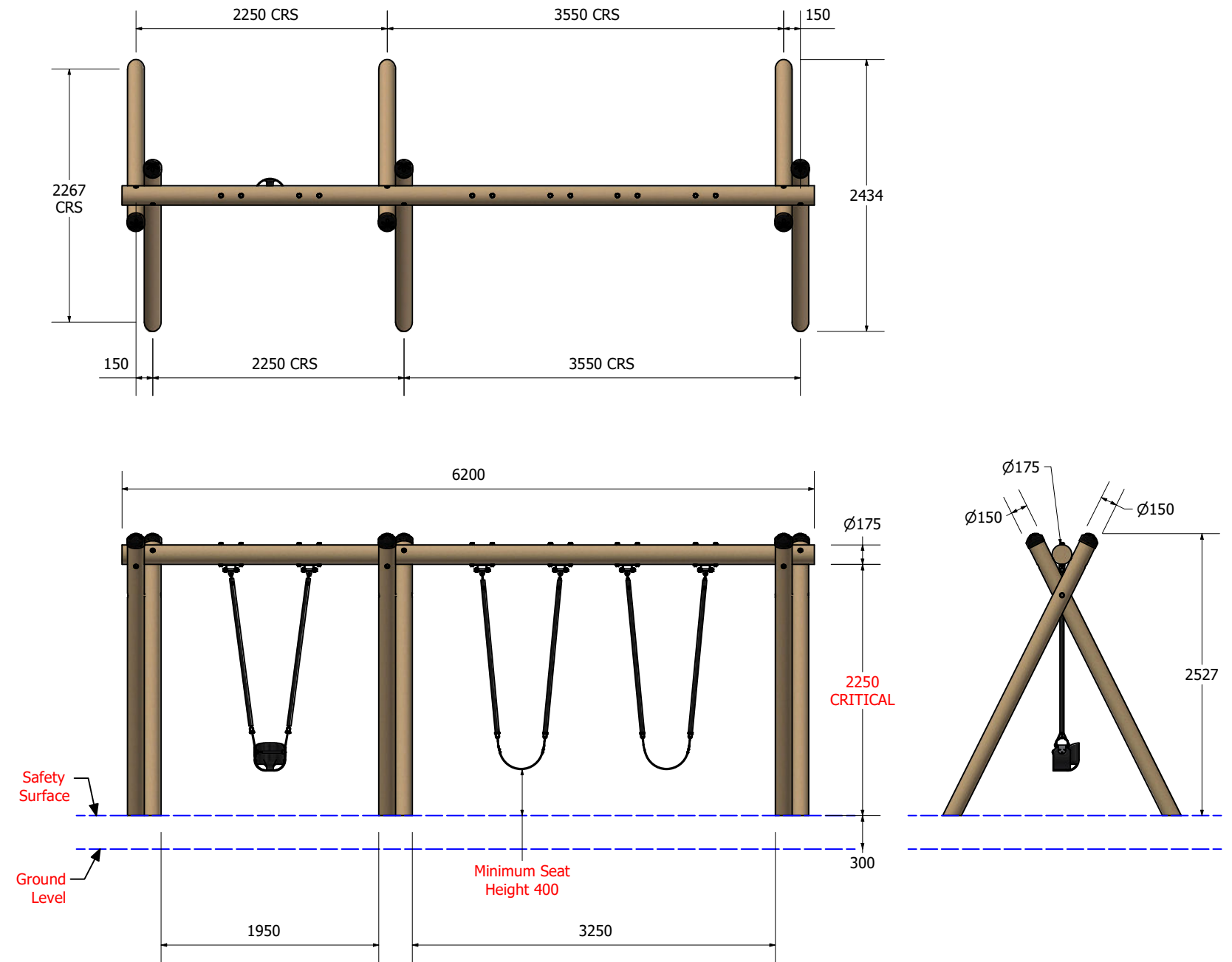
# TIMBAPLAY SWING - 3 BAY - 2VR - TWC

SWTP3S02

## FALLZONE



## DIMENSIONS AT GROUND LEVEL



Technical Information	
Main Dimension	7800 x 6500
Total Area	51 sq/m
Max FHO	1300 mm
Heaviest Part	100 kg
Compliant to	NZS 5828:2015 AS 4685:(series) EN 1176:2008